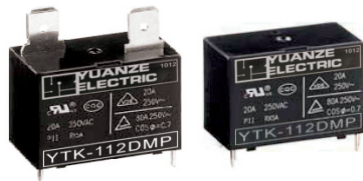


Features

- 250# quick connect and PCB terminal types available.
- Miniature relay with high switching capability, especially suitable for motor and computer control.



Safety Approval

UL, TUV, CQC

Contact Capacity

Model	YTK
Nominal Switching Capacity	20A 250VAC 25A 277VAC
Max. switching current	25A
Max. switching voltage	277VAC
Max. switching power	5,000VA

Characteristic Data

Contact material	Silver alloy	
Initial contact resistance(at6VDC 1A)	50mΩ Max.	
Operate time(at nominal volt)	20msec. Max.	
Release time(at nominal volt)	10msec. Max.	
Initial insulation resistance	1,000MΩ Min.(DC500V)	
Initial dielectric strength	Between open contacts: AC1,000V,50/60HZ 1Min.	
	Between coil and contacts: AC4,000V,50/60HZ 1Min.	
Vibration resistance	Functional	10-55 HZ at double amplitude of 1.5mm
	Destructive	10-55 HZ at double amplitude of 1.5mm
Shock resistance	Functional	10G Min.
	Destructive	100G Min.
Endurance(operations)	Mechanical(at 10,800ps.h)	10,000,000 times
	Electrical(at 900ps.h)	100,000 times
Ambient temperature	-40℃ ~ + 85℃(no condensation)	
Unit weight	Approx.25.0g	

Coil Data(at 20℃)

Nominal voltage (VDC)	Nominal operating current ± 10% (mA)	Coil resistance ± 10% (Ω)	Allowable voltage (Max.)	Pick-up voltage (Max.)	Drop-out voltage (Min.)	Nominal operating power
5	180.00	27.8	130% of nominal voltage	75% of nominal voltage	5% of nominal voltage	0.90W
6	150.00	40				
9	100.00	90				
12	75.00	160				
18	50.00	360				
24	37.50	640				
48	18.75	2,560				

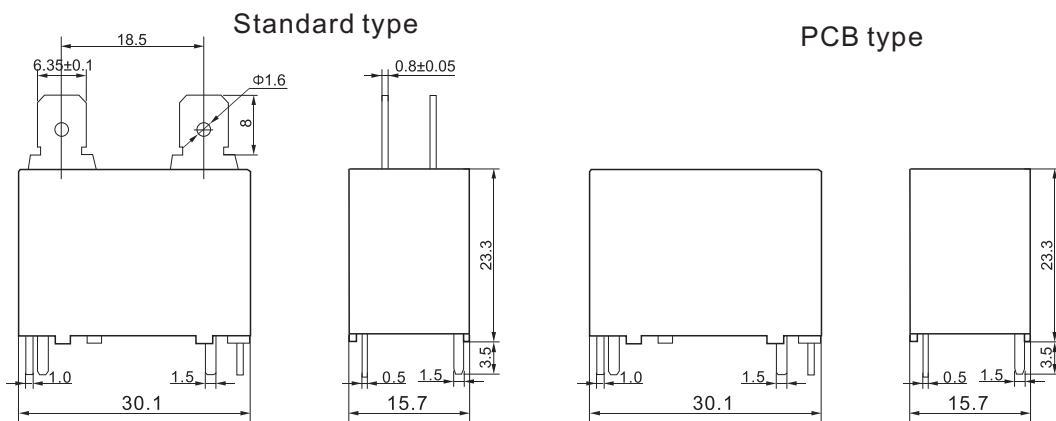
Safety Approval Ratings

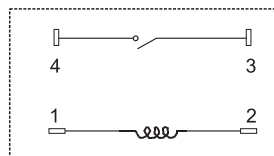
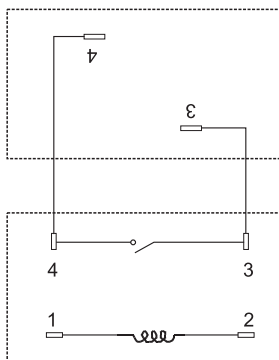
Approval	CQC	TUV	VDE	UL/TUV
Approval ratings	25A 250VAC	Only YTK: 25A 250VAC 2HP 240VAC	20A 250VAC	YTK: 25A 250VAC, Resistive 15A 250VAC, General Use YTK: 20A 250VAC, Resistive 20A 250VAC, General Use 25A 277VAC, Resistive 25A 277VAC, General Use 25A 250VAC, Resistive 25A 250VAC, General Use 2HP 240VAC TV-10, 120VAC Pilot duty: A300, 120VAC & 240VAC

Ordering Information

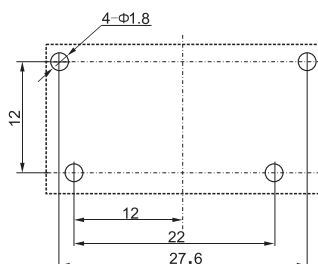
Nomenclature					
YTK	-1	12	D	M	P-XX
Special Parameter: Nil-Standard type Letter or number-Special requirement					
Terminal Type: Nil-Standard, P-PCB					
Contact Form: M-Form A					
Coil Power: D-0.90W					
Coil Voltage: 03,05,06,09,12,24, 48					
Number of Pole: 1-1 Pole					
Type Designation: YTK					

Outline Dimensions, Wiring Diagram, P.C Board Layout (Unit:mm)

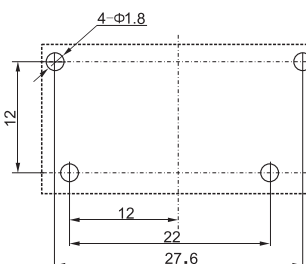




Wiring Diagram(bottom view)



Unless otherwise specified:
 <1mm, tolerance, ±0.2mm;
 1-5mm, tolerance, ±0.3mm;
 >5mm, tolerance, ±0.4mm;
 Note: 1. Extended terminal dimension is dimension before soldering.
 2. Tolerance of PCB layout: ±0.1mm



PCB Layout(bottom view)

Typical Applications

- Motor
- Industrial control equipment, monitor
- Compressor control
- Home appliances, air conditioner, microwave oven

Characteristic Curves

